



Linden Lea Bawtry Road

Austerfield, Doncaster, DN10 6QP

Guide Price £425,000

GUIDE PRICE £425,000 - £450,000

Nestled in the charming village of Austerfield, Doncaster, this delightful detached house on Bawtry Road offers a wonderful opportunity for those seeking a spacious family home on a fantastic plot.

The property is set on a substantial 0.36-acre plot, offering an open aspect to the side and rear, which enhances the sense of space and tranquillity. One of the standout features of this home is the parking provision, accommodating up to five vehicles, making it ideal for families with multiple cars or for hosting visitors. The sought-after village location adds to the appeal, providing a peaceful environment while still being conveniently close to local amenities.

This property is priced to allow for some further modernisation, giving you the chance to put your personal touch on your new home. With no chain involved, you can move in without delay, early viewing is highly recommended.

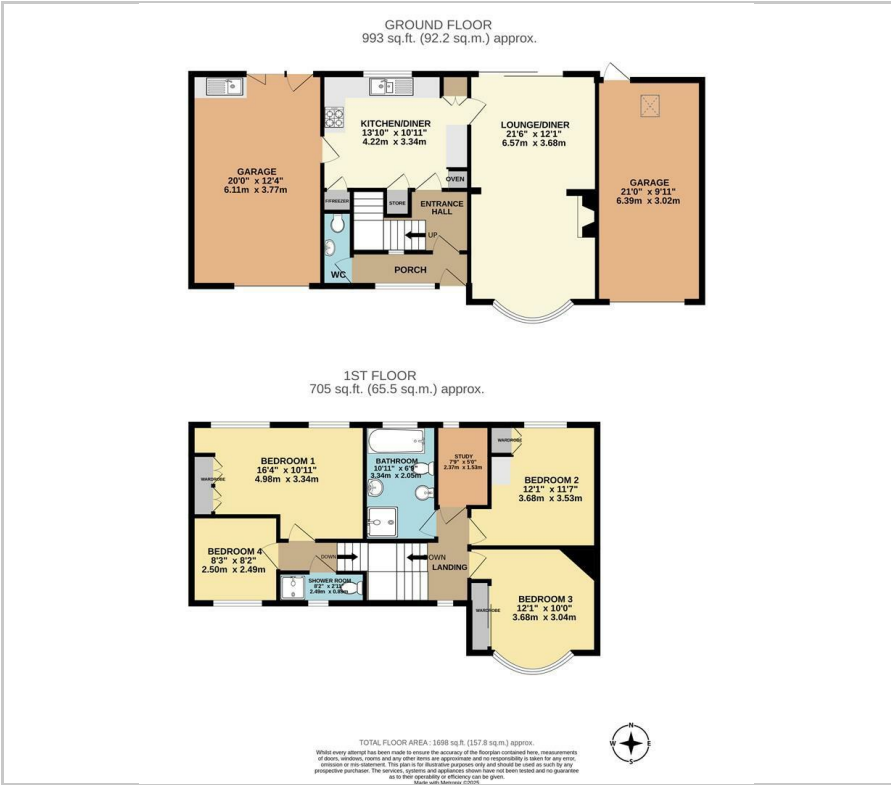
- Detached house
- Substantially extended
- Large gardens stretching to 0.36 acre
- Four generously sized bedrooms
- Two bathrooms
- Priced to allow for modernisation
- Ample off road parking and two large garages
- Plenty of potential to further extend (subject to planning)
- No onward chain
- Early viewing is highly recommended

Viewing

Please contact our Office on 01302 751616 if you wish to arrange a viewing appointment for this property or require further information.



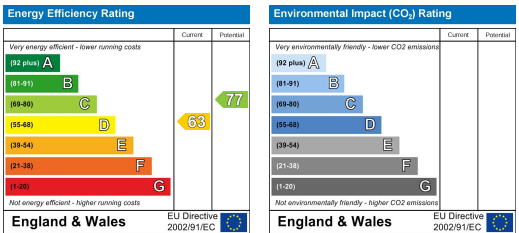
Floor Plan



Area Map



Energy Efficiency Graph



These particulars, whilst believed to be accurate are set out as a general outline only for guidance and do not constitute any part of an offer or contract. Intending purchasers should not rely on them as statements of representation of fact, but must satisfy themselves by inspection or otherwise as to their accuracy. No person in this firm's employment has the authority to make or give any representation or warranty in respect of the property.